

Art Here 2025

Call for proposals



اللوفا ر أبو ظبي
LOUVRE ABU DHABI



RICHARD MILLE

Call for proposals

Art Here 2025

Richard Mille Art Prize

For the fifth edition of *Art Here*, Louvre Abu Dhabi has called all contemporary artists based in the GCC and Japan, the award is also open to artists based in MENA and connected to the GCC, working in sculpture and installations suitable for its outdoor spaces, to become part of its universal story. In collaboration with Richard Mille, Louvre Abu Dhabi aims to support art practitioners by giving them a central platform for expression in *Art Here 2025*.

Timeline

Application deadline: 30 April 2025

Announcement of the selected artists: May 2025

Inauguration of the exhibition: October 2025

Shadows

This year, the annual Open Call expands its geographical reach towards Japan, embracing commonalities across architecture, art, poetry, and traditional values. *Art Here 2025* invites artists to respond to the concept of "Shadows", to explore the similarities in aesthetics of the Arabian Gulf and Japan.

"Shadows" is an invitation for artists to explore the beauty in shaded spaces for contemplation. It is an invitation for artists to craft and design their own interpretations of light and darkness. Shadows are not only comforting – they can be incredibly poetic, suggesting an alternate reality created by the control of light. They often create introspective moments in exterior spaces.

"Shadow" is translated to *In'ei* (陰影) in Japanese. It refers to the state of dimness or faint light created when direct light is blocked. Light is diffused, often obscured within alcoves, creating a liminal space conducive to meditation. One example is the *shoji* screen found in many Japanese homes, which diffuses light from the inner *engawa* corridor, similar to how *mashrabiya* windows mask harsh sunlight within *minwar* light wells in traditional Khaleeji households. Studies of materials such as lacquerware reflecting light in subtle ways or carved wood giving geometrical shapes to *mashrabiya* windows would allow to reinterpret the topic in a contemporary context.

The UAE and the greater Gulf also hold a special place for hiding under the harsh suns of its coastline and deserts. Shadows are more than a survival mechanism: beauty is found in designing shadows for interior spaces, containing inner private worlds. Often privileging materials that absorb rather than reflect light, art, and architecture from both ends of West and East Asia have ornamented the act of shadowing, which also permeates philosophical understandings of the public sphere.

This year's edition of *Art Here* reaches towards Japan to celebrate the beauty of shadows, within a material connection and a contemplation of light. It does so under the Louvre Abu Dhabi dome, inspired by the infinite shadows found under the Al Ain Oasis palm trees.

How do we artistically reinterpret and encompass the existing shadows of the Louvre Abu Dhabi's iconic dome? How do colors, shapes, and materials react to dimness, rather than brightness? What kind of patterns can shadows create, both in natural and artificial form? And more importantly, what meanings can be derived from hiding, erasing, and re-creating light? These are the thematic directions posed by this edition of the Art Prize, inviting artists from both the GCC region and Japan to respond with their own observations of where they stand and where they are heading.

Sophie Mayuko Arni
Art Here 2025 Guest Curator

How to apply

All applications should be sent via the registration link and uploaded as a combined pdf (maximum 20 pages) on the application form. The application should contain the following elements*:

- Curriculum Vitae.
- Copy of ID or passport (open to nationals and residents of the GCC and Japan, artists from the MENA with GCC connection). Non-nationals must also provide proof of residence permit (visa or ID).
- Portfolio.
- A short text explaining the concept of the proposed artwork (500 words).
- Sustainability methodology in terms of materials or production preferred with the use of UAE based fabricators highly recommended.
- The technical specifications of the proposed artwork (images/ files and their descriptions, exhibition requirements, etc.)
- A provisional budget for artwork production and installation capped at 100,000 AED. Provisional budget should be inclusive of artist travel and accommodation for install, opening in October (one week in Abu Dhabi), and the Richard Mille Art Prize ceremony in December.

* Incomplete applications will not be studied

Submit your proposal here

<https://www.louvreabudhabi.ae/en/exhibitions/art-here-2025>

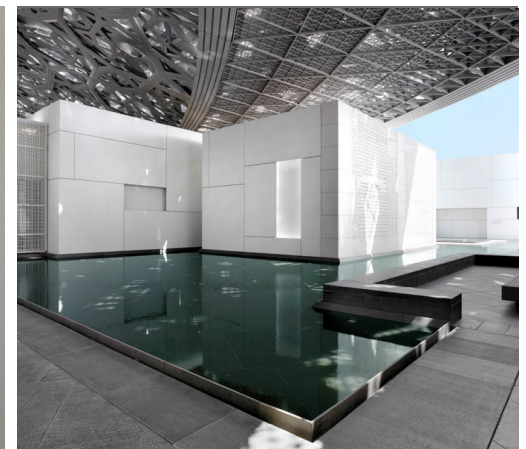
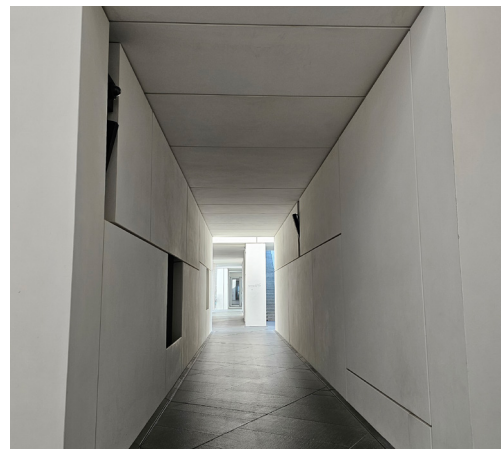
For any questions please email:

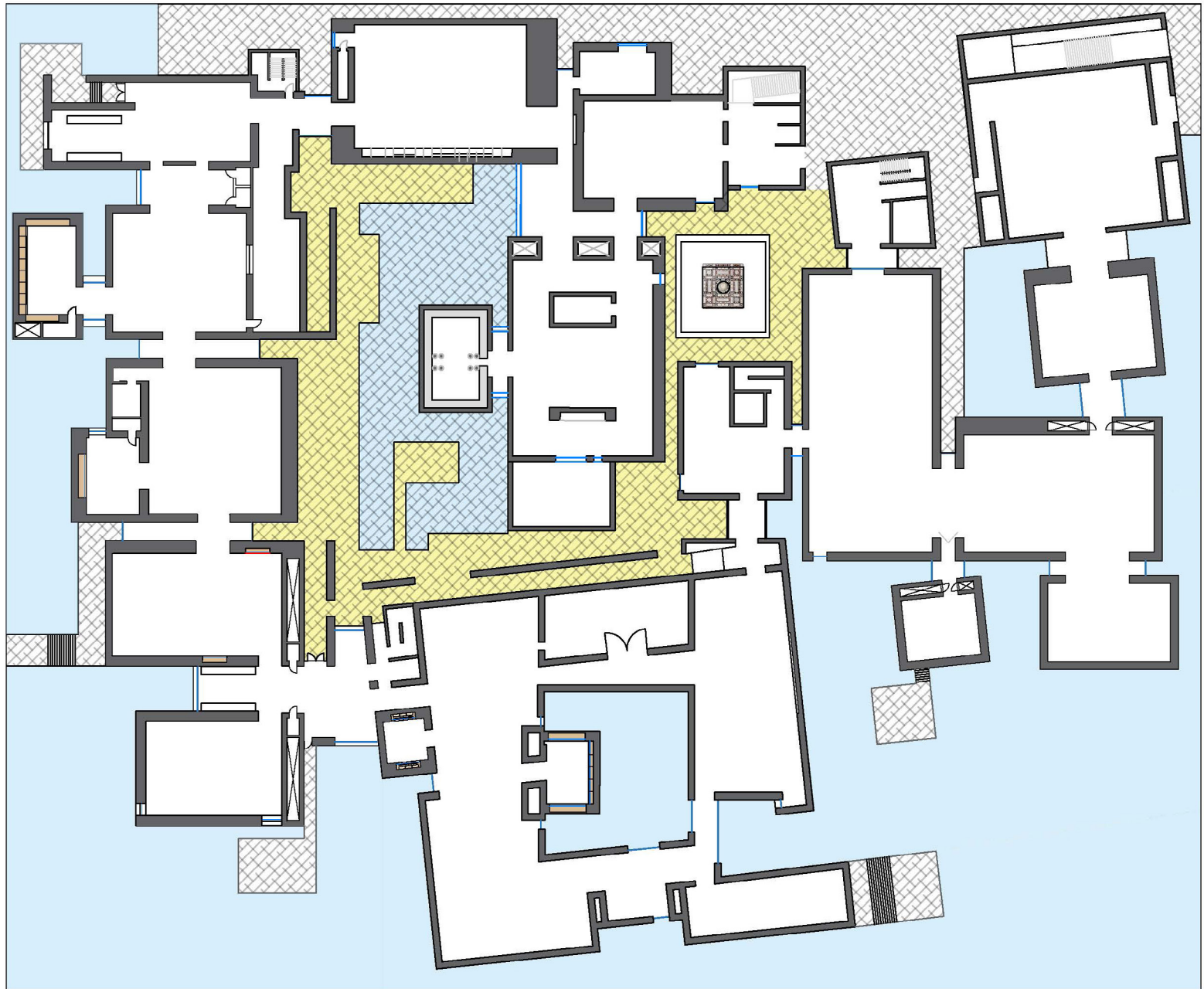
artprize@louvreabudhabi.ae

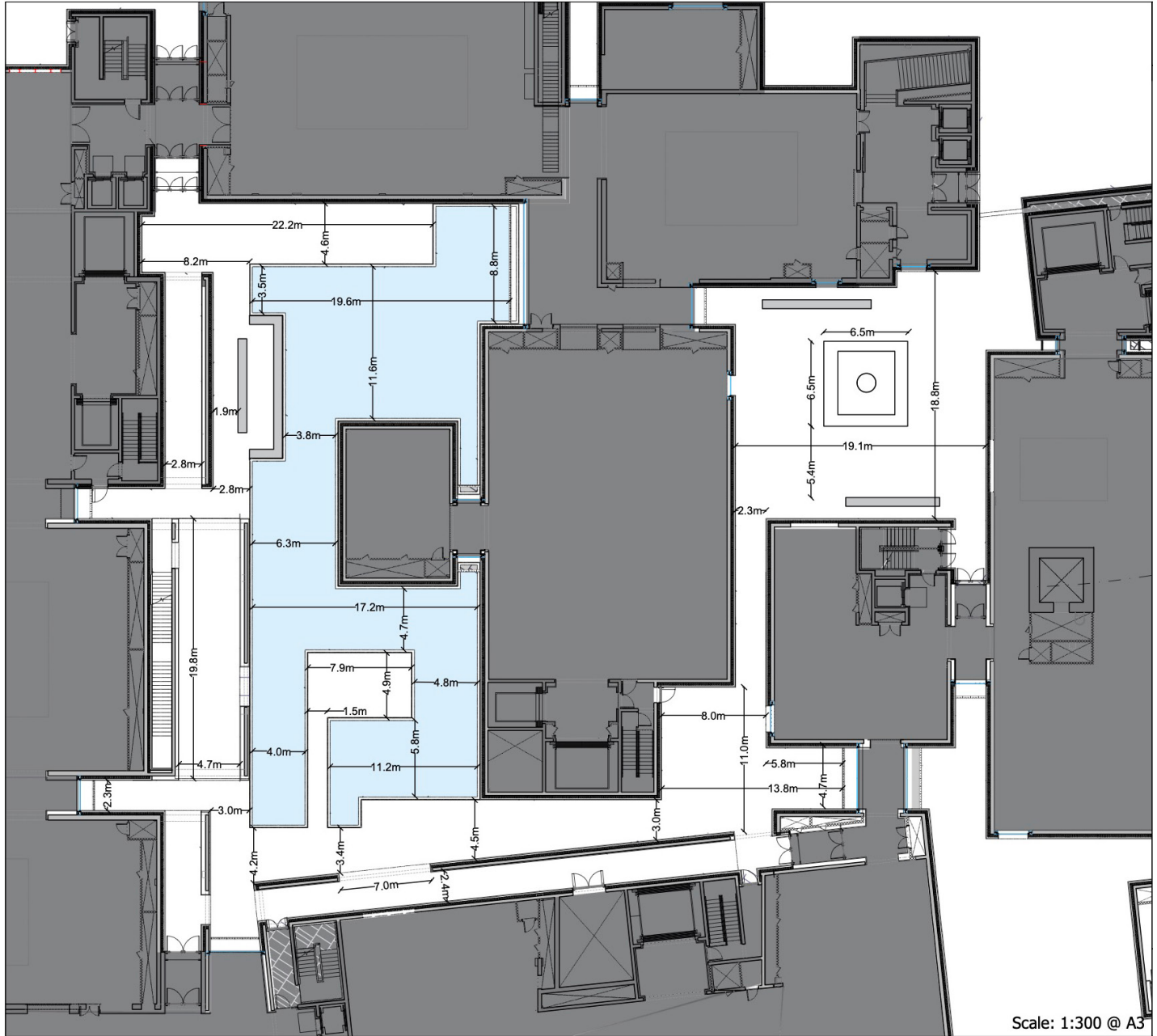
Exhibition space - Al Bahra

Applicants are invited to engage with the external spaces under the dome of Louvre Abu Dhabi. The total available exhibition area of 1780 m² is comprised of the paved 1200 m² and 580 m² on water. The visitor journey begins around the courtyard with the Damascene fountain and extends via a passageway towards a meditative shallow pool and the public art wall installation by Jenny Holzer.

@Department of Culture and Tourism - Abu Dhabi, Photo Yorgis Yerolymbos
Bottom right: © 2023 Jenny Holzer, member Artists Rights Society (ARS), NY







Scale: 1:300 @ A3



@louvreabudhabi.ae
LouvreAbuDhabi.ae
+971 600 56 55 66